

Newsletter – March 2022

Ship Centre re-Opens for 2022



The Ship Centre is opening from Friday 8th April from 10:30 m – 4:00 pm.

The centre will be open for visitors Friday's and Saturday's and we look forward to seeing you and your friends in the company of the ship.

There is the opportunity to volunteer at the centre of Fridays and Saturday please contact chair@newportship.org for further information.



New Format

From this edition the irregular, longer Newsheet is being replaced with a regular and shorter less formal approach. It is planned that this will be circulated monthly (preferably via email) we will be aiming for the letter to reach you during the third week of the month. We want your input into the content. The Newsletter belongs to FoNS Members. Contact Liz the editor at Secretary@newportship.org as part of the 20th Anniversary we are looking to share your experiences of seeing the ship, visiting the centre why the ship is important to you.



March report from the Board

FoNS Board met on the 23rd of February. Discussions around re-opening of the centre two days of the week and our 20th Anniversary made the meeting extremely positive.

“We do, just, have enough volunteers to open but would much welcome a few more, especially to help with the shop. We have already advertised widely. We are also keen to continue to offer group tours and talks by appointment – contact Sian at chair@newportship.org. We are delighted to be receiving some practical support from Emma Newrick, Client Project Manager at the Transporter Bridge, in terms of producing a family-friendly pack to use for the Ship Centre tours, as well as an illustrated talk for schools which she has offered to deliver. We continue to work closely with Newport Council on the publicity and social media front. The FONS Board enthusiastically welcomed a proposal to commission a poem about the Ship, possibly from the soon-to-appointed Poet for Wales, to commemorate our 20th anniversary year. Finally, on the library front, we can report that we have recently had two generous donations. Jerry Cross, long-time Friend, has given 35 books with a promise of more to come! The Brunel Institute Library at S.S. Great Britain has allowed us first choice on their disposals list, which has resulted in a further 58 titles added to the collection.”



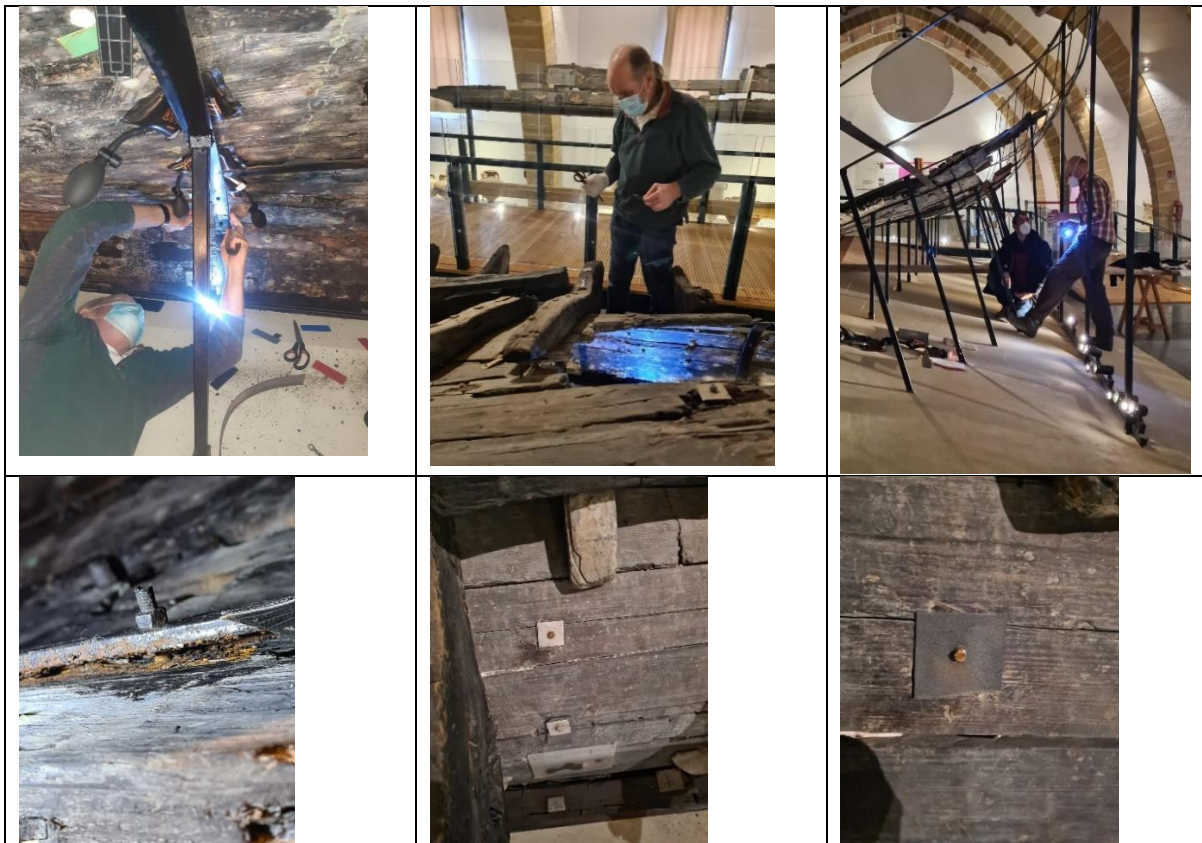
Ship Centre report from Toby, Curator Newport Medieval Ship Project

Preparations to reopen the ship centre to the public are well underway! We have re-erected the display boards and prepared the multimedia displays. We should have the new animation and Living Levels touchscreen display just in time for the April opening.

We are making arrangements to collect the last of the timbers from York Archaeological Trust in early April, and Mary Rose Archaeological Services in Portsmouth reckon they are currently drying the penultimate load! We are on track to finish the freeze-drying phase of the conservation project by late summer 2022.



I recently returned to Sicily to work on the Marsala Punic Wreck – Pat Tanner and I inserted a foam barrier between the hull timbers and steel cradle and installed some more supports to reduce point loading on areas of the 2200-year-old hull. We are researching new cradle designs and materials in an effort to remedy the distortion and collapse of the Punic ship. The results will be directly applicable to the challenge of designing a support structure for the Newport Ship.



Marsala Punic Wreck Cradle
Toby Jones & Pat Turner February 2022

I look forward to seeing many of you when the ship centre reopens to the public in April and at the numerous upcoming events to mark the 20th Anniversary of the ships discovery!

I look forward to seeing many of you when the ship centre reopens to the public in April and at the numerous upcoming events to mark the 20th Anniversary of the ships discovery!

Thanks for your support!



Events

“Secrets of Newport Medieval Ship - Thursday 12th May

Dr Toby Jones will unravel the secrets of this mid-15th Century merchant vessel at the Lysaght Institute, Orb Drive, Newport, NP19 0RA from 19:00 - 20:30.

Discovered and raised in 2002-3, the preserved hull remains and artefacts of the Newport Medieval Ship (c. 1449-1469) have progressed through cleaning, digital documentation, analysis and conservation. Examination of the ship timbers have led to a greater understanding of Atlantic-Iberian ship design and ship building in the late medieval period. Recovery of such a unique find of unparalleled craftsmanship offers insights into technological innovation at the very beginning of the Age of Exploration and the complexity of Anglo-Welsh /Iberian trading links. Join Dr Toby Jones as he reveals the secrets behind this vessel and what it has shown us about medieval life on-board and in Newport.

This talk is part of the 20th anniversary commemorations organised by Newport Museums and Heritage Service in partnership with the Friends of the Newport Ship. All funds raised through ticket sales will contribute to the restoration of the vessel and the community engagement programme.

Purchase Tickets HERE: ["The Newport Medieval Ship 20 years on : Unravelling the secrets" Tickets, Thu 12 May 2022 at 19:00 | Eventbrite](#)

“The Monmouthshire Pompeii’ - Tuesday March 29th 7pm

A free online talk with Oliver Blackmore, Collections and Engagement Officer at Newport Museum and Art Gallery. An introduction to the Edwardian excavation of Roman Caerwent (Venta Silurum), discussing the background to the dig, the characters involved and the nationally important finds on display and in store at Newport Museum and Art Gallery.

<https://www.eventbrite.co.uk/e/the-monmouthshire-pompeii-the-antiquarian-excavation-of-venta-silurum-tickets-293799721877>



Keep In Touch With the Friends of Newport Ship

Newport Medieval Ship Centre (*Opening*) Unit 20, Estuary Road, Queensway Meadows, Newport, NP19 4SP

Friends of Newport Ship: Charity Number 1105449

Telephone: 01633 274167

Website: www.newportship.org

Chair: Sian King chair@newportship.org

Editor: News Sheet/ Annual Newsletter – Liz Aiken secretary@newportship.org / 07769713918

Social Media: Liz Gulliver either Direct Message or email liz.gulliver@btinternet.com



Facebook

Friends of Newport Ship – facebook.com/fonsnewportship

Newport Medieval Ship Project – facebook.com/newportship



Twitter - [@NewportShip](https://twitter.com/NewportShip)



Instagram - [newport_ship](https://www.instagram.com/newport_ship)

